

CERTIFICATE OF LOCATION OF GOVERNMENT CORNER

NORTHEAST Corner of Section 12, Township 106, Range 40, 5TH P.M.

STATE OF MINNESOTA, County of MURRAY

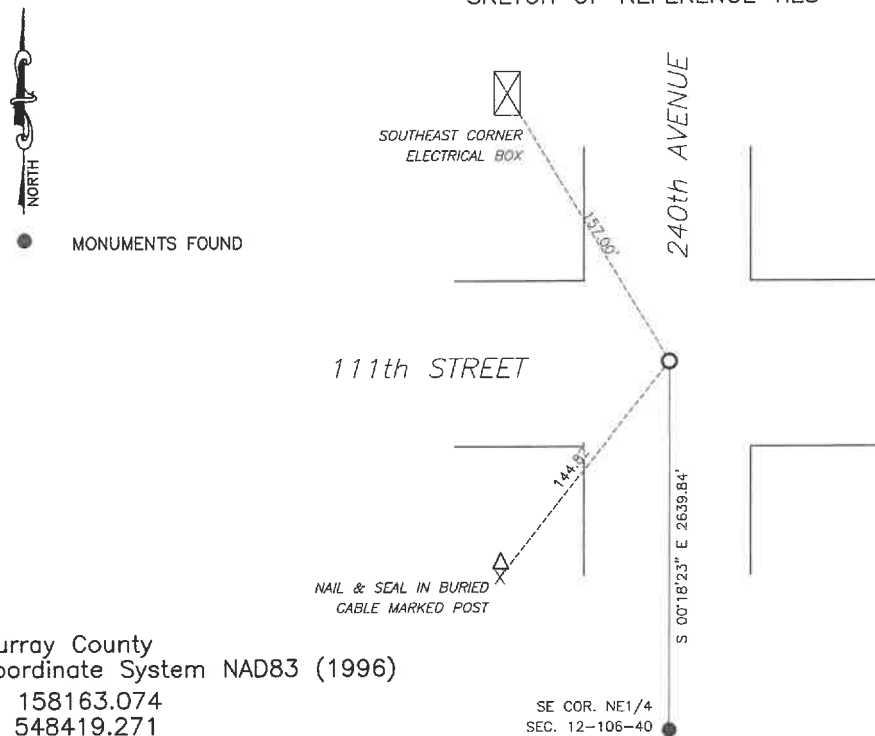
At the corner location shown on the sketch:

☒ On 7/24/2024 found a LARGE FIELD STONE
DATE

☒ left monument as found, ☐ lowered monument, ☐ removed monument (explain)

☒ On 1/30/2025 placed a 5/8" IRON WITH SEAL #43844 OVER TOP OF THE STONE
DATE

SKETCH OF REFERENCE TIES



Murray County
Coordinate System NAD83 (1996)
N: 158163.074
E: 548419.271

WGS84
LAT: 44°00'26.8163"
LON: -95°34'57.5522"

Statement of evidence relative to this corner location is on back of page.

I hereby certify that this document and the data contained herein was prepared by me or under my direct supervision.

Daniel L. Bueltel
License No. 43844

3/12/2025
DATE

MAR 13 2025

MURRAY COUNTY RECORDER

Statement of Evidence

NORTHEAST CORNER SECTION 12, T106N, R40W OF THE 5th P.M.

In 1861 J.W. Myers did the original survey of the township lines.

A survey dated May 15, 1975, notes a field stone located at the corner.

County records dated May 1, 1988 notes a field stone located at the corner and a steel pin placed above the monument.

County records dated May 25, 2012 note an iron pin located at the corner.

On July 24, 2024 Bueltel-Moseng Land Surveying located an iron at the corner, dug with a backhoe and found a large field stone.

Returned on January 30, 2025 and set a $\frac{5}{8}$ " iron with seal #43844 over top of the stone.